

GRAVELLY®

**5000 SERIES
TRACTORS
ILLUSTRATED
PARTS
LIST**

Form No. 32810 (6-80)
Printed in U.S.A.



TO CONTINUE ITS PROGRAM OF QUALITY AND DESIGN IMPROVEMENTS, THE MANUFACTURER RESERVES THE RIGHT TO CHANGE SPECIFICATIONS, DESIGNS AND PRICES WITHOUT NOTICE AND WITHOUT INCURRING OBLIGATION. THE MANUFACTURER ALSO RESERVES THE RIGHT TO SHIP WITHOUT NOTICE AND WITHOUT INCURRING OBLIGATION.

 **GRAVELLY**

Gravelly Division, McGraw-Edison Company
One Gravelly Lane, Clemmons, NC 27012

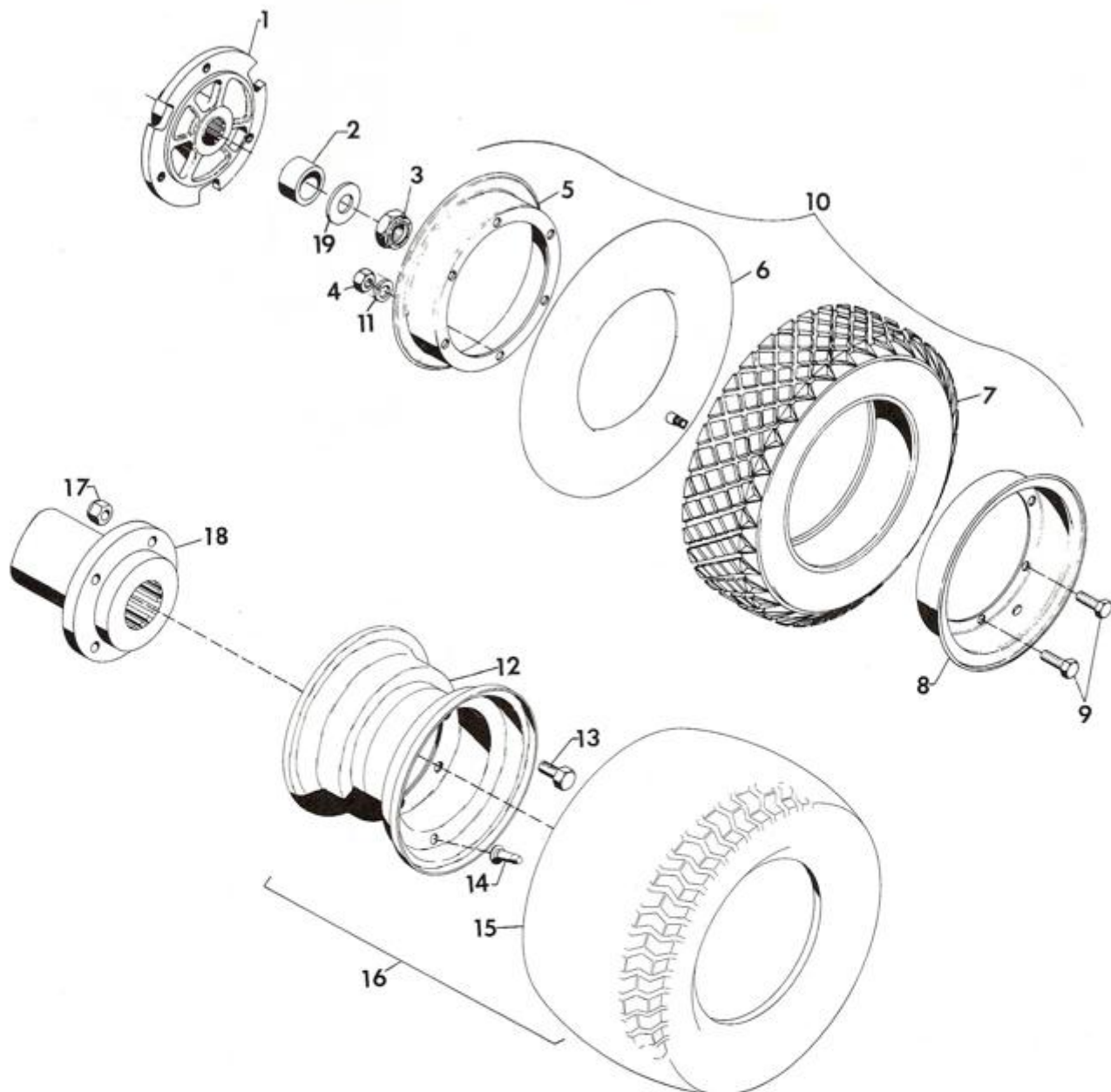
5000 SERIES TRACTORS ILLUSTRATED PARTS LIST

Form No. 32810 (6-80)
Printed in U.S.A.

TABLE OF CONTENTS

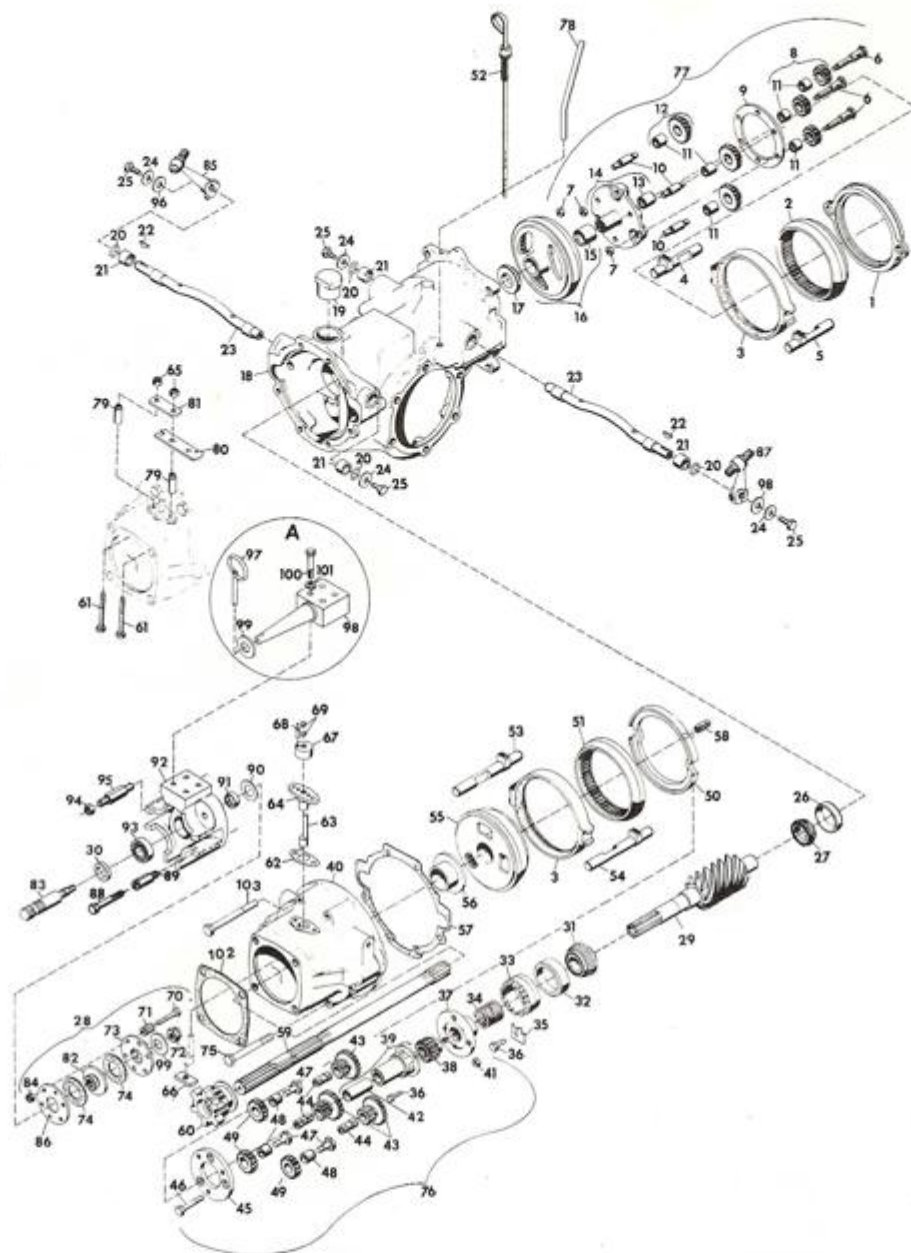
	Page
Wheel Assemblies	1
Transmission	2
Standard Differential	4
Swiftamatic	6
Frame For Models 5200, 5210 and 5240	8
Frame For Models 5260, 5265, 5460, 5645, 5660 and 5665	10
Controls	12
Remote Air Cleaner	14
Engine and Exhaust System	15
Electric System 5265 and 5665	16
Electric System 5260, 5460 and 5660	17
Wiring Diagram 5260, 5460 and 5660	18
Wiring Diagram 5265 and 5665	18

WHEEL ASSEMBLIES



ITEM NO.	PART NO.	QTY.	DESCRIPTION
1	22507	1	Hub, Wheel
2	22512	2	Spacer
3	22502	1	Nut, 3/4-10 Light Thin Hex
4	124829	3	Nut, Jam; 3/8-16 Hex
5	12674	1	Disc, Inner, Wheel
6	11645	1	Tube, 500 x 8
7	13836	1	Tire, Tractor; Diamond Tread
	13835	1	Tire, Tractor; Ground Grip
	18762	1	Tire, Semi-Pneumatic; 16 x 5W x 3 Firestone
8	12673	1	Disc, Wheel
9	428638	3	Bolt, Hex; 3/8-16 x 5/8
	180120	3	Bolt, Hex; 3/8-16 x .750
10	10141	1	Assembly, Super Grip Wheel
	10142	1	Assembly, Diamond Tread Wheel
	19563	1	Tire, Wheel Assembly; 18 x 6.50-8
	21221	1	Wheel, Semi-Pneumatic Assembly
11	120382	3	Washer, Lock; 3/8 SP
12	23267	1	Rim, 18 x 8.50-8
13	180175	4	Bolt, Hex; 1/2-13 x 1.25
14	11191	1	Assembly, Valve Stem
15	15222	1	Tire, Rear 408
16	23268	1	Assembly, Wheel; 18 x 8.50 x 8
17	435507	4	Nut, Lock; 1/2-13 Washer Insert
18	22551	1	Hub, 7" Wheel
19	131017	1	Washer, Flat; .812 x 1.469 x .134

TRANSMISSION

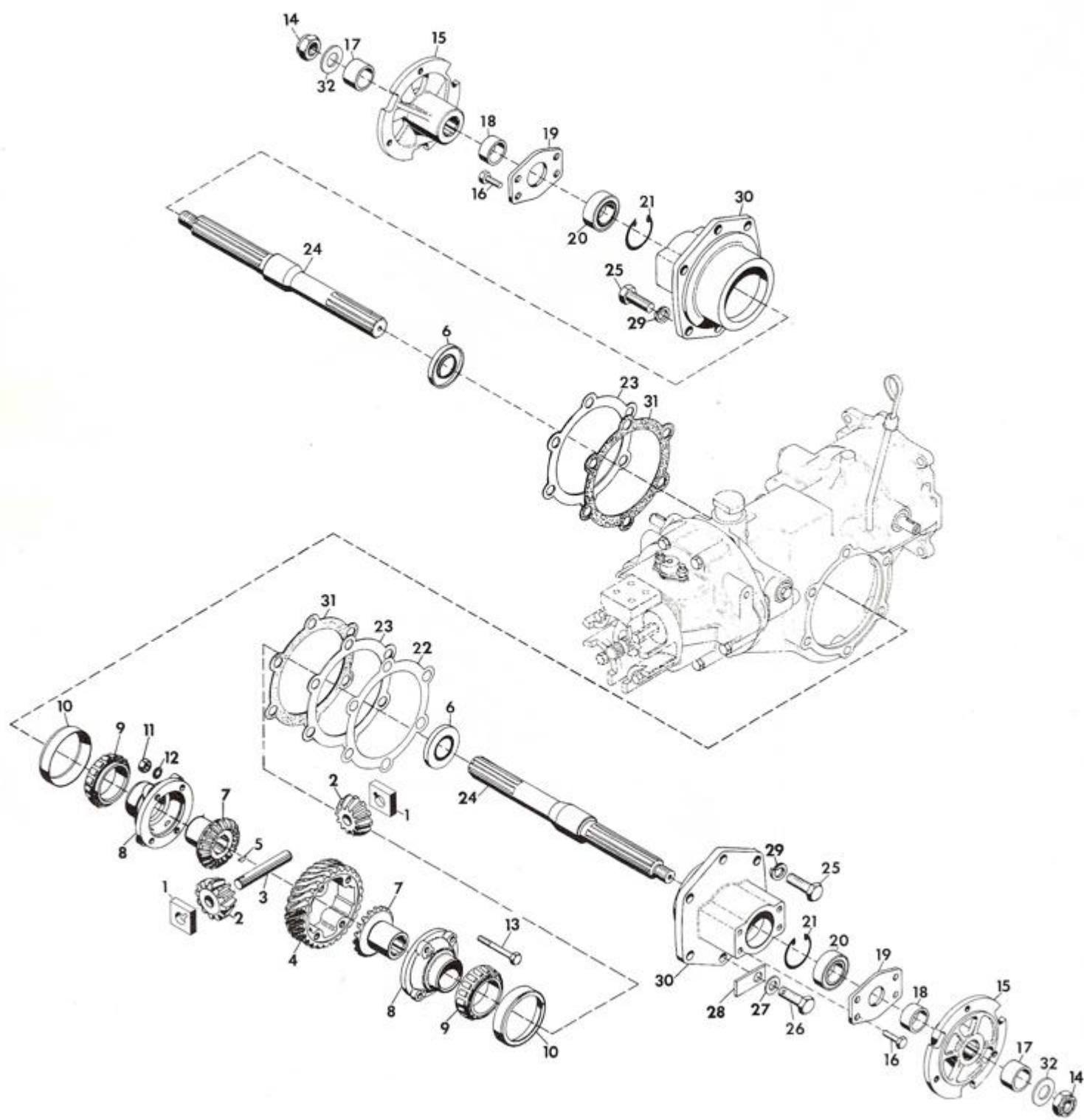


ITEM NO.	PART NO.	QTY.	DESCRIPTION
1	11183	1	Spacer, Rear
2	11182	1	Gear, Rear Ring
3	12644	2	Assembly, Clutch Cup
4	11184	1	Rod, Rear L.H. Clutch Slide
5	11185	1	Rod, Rear R.H. Clutch Slide
6	11181	3	Bolt, Orbit Gear
7	11342	3	Nut, Lock; 5/16-18 L.H. Thread
8	11179	3	Assembly, External Orbit Gear
9	11178	1	Spacer, Pin
10	11174	3	Pin, Hi-Lo Orbit Gear
11	11177	6	Bushing, .501 x .627 x .495
12	11175	3	Assembly, Internal Orbit Gear
13	11172	1	Bushing, .737 x .877 x .682
14	11171	1	Assembly, Planet Gear Carrier
15	11169	1	Bushing, 1.231 x 1.502 x 1.312
16	11168	1	Assembly, Ring Gear and Bushing
17	12645	1	Plate, Rear Thrust
18	10628	1	Chasis
19	10617	1	Plug, Oil Filter
20	10663	4	O-Ring; .750 x 1.00
21	10618	4	Bushing, .750 x 1.002 x .625
22	124545	2	Key, Woodruff; .125 x .625 Hard
23	10625	2	Shaft, Actuating
24	12694	4	Washer, Flat; .265 1.250 x .063

<u>ITEM NO.</u>	<u>PART NO.</u>	<u>QTY.</u>	<u>DESCRIPTION</u>
25	180016	4	Bolt, Hex; 1/4-20 x .50
26	10390	1	Cup, Roller Bearing
27	10389	1	Cone, Roller Bearing
28	22484	1	Assembly, Clutch Attachment
29	21242	1	Weldment, 6-Lead Worm
	21241	1	Weldment, 4-Lead Worm
	21243	1	Weldment, 8-Lead Worm
30	11841	1	Ring, Steel Retaining; .978 x 1.500 x .300
31	12332	1	Cone, Roller Bearing
32	12333	1	Cup, Roller Bearing
33	12635	1	Nut, Bearing Adjustment
34	12663	1	Spacer, Spring Pin Plate
35	12648	1	Nut, Adjusting
36	180018	1	Bolt, Hex; 1/4-20 x .625
37	12633	1	Plate, Front Pin
38	12637	1	Gear, Sun Pinion Spur
39	14923	1	Assembly, Quill and Bushing
40	12587	1	Casting, Advance
41	120375	3	Nut, Hex; 1/4-20
42	12662	1	Bushing, .875 x 1.000 x 2
43	12639	3	Gear, Orbit Spur
44	12640	3	Pin, Fwd-Rev Orbit Gear Steel
45	12655	1	Spacer, Front Pin
46	12643	3	Bolt, Spacer (Right Hand)
47	12658	3	Bolt, Reverse Idler
48	12657	3	Bushing, Reverse Idler; .375 x .685 x .516
49	12656	3	Gear, Reverse Idler Spur
50	12636	1	Cup, Gear
51	12632	1	Gear, Internal Spur
52	10622	1	Assembly, Dipstick
53	12677	1	Rod, L.H. Clutch Slide
54	12678	1	Rod, R.H. Clutch Slide
55	12654	1	Cone, Reverse Gear
56	14921	1	Assembly, Thrust Bushing
57	12591	1	Gasket, Chassis Front
58	13456	1	Pin, Roll
59	11298	1	Shaft, Pinion
60	12660	1	Dog, Attachment
61	180089	2	Bolt, Hex; 5/16-18 x 2-1/4
62	18318	1	Gasket, Shipper Shaft
63	10686	1	Shaft, Shipper
64	23034	1	Guide, Shipper Shaft
65	419455	4	Nut, Lock; 5/16-18 Washer Insert Hex
66	12601	1	Block, Trunnion
67	10688	1	Body, Shipper Shaft
68	12320	1	Dowel, Shifter Body
69	102591	2	Screw, Set; 3/8-16 x 1/4 Hex Socket
70	181618	6	Bolt, Hex; 5/16-24 x 1-3/4
71	12871	6	Spring
72	19918	1	Nut, Lock 5/8-24
73	12867	1	Plate, Dog
74	12870	2	Washer, Friction
75	187147	2	Bolt, Hex 5/16-18 x 3.50
76	14922	1	Assembly, Fwd-Rev Planetary
77	14615	1	Assembly, Hi-Lo Planetary
78	10586	1	Guide, Dipstick
79	12123	2	Spacer, Shipper Shaft Guide
80	12122	1	Arm, Shifter
81	20822	1	Spacer, Strap
82	22480	1	Plate, Drive
83	22482	1	Shaft, Quick Hitch
84	125339	6	Nut, Jam; 5/16-24
85	21384	1	Assembly, Fwd-Rev Lever
86	12868	1	Plate, Back
87	21383	1	Assembly, Hi-Lo Lever
88	180173	2	Bolt, Hex; 1/2-13 x 1
89	22479	2	Stud, Quick Hitch
90	11983	1	Bearing, Thrust; 1.012 x 1.750 x .125
91	11227	1	Bearing, Needle; 1.000 x 1.250 x 2.000
92	22483	1	Adapter, Quick Hitch
93	11293	1	Bearing, Ball; 1.000 x 2.000 x .562
94	120378	2	Nut, Hex; 1/2-13
95	24824	2	Stud, Quick Hitch
96	131017	2	Washer, Flat; .812 x 1.469 x .134
97	11902	1	Pin, Klik
98	22481	1	Pin, Quick Hitch
99	131016	1	Washer, Flat; .656 x 1.312 x .095
100	180132	4	Bolt, Hex; 3/8-16 x 2-1/4
101	120382	4	Washer, Lock; 3/8 SP
102	5056	1	Gasket
103	180735	4	Bolt, Hex; 1/2-13 x 1

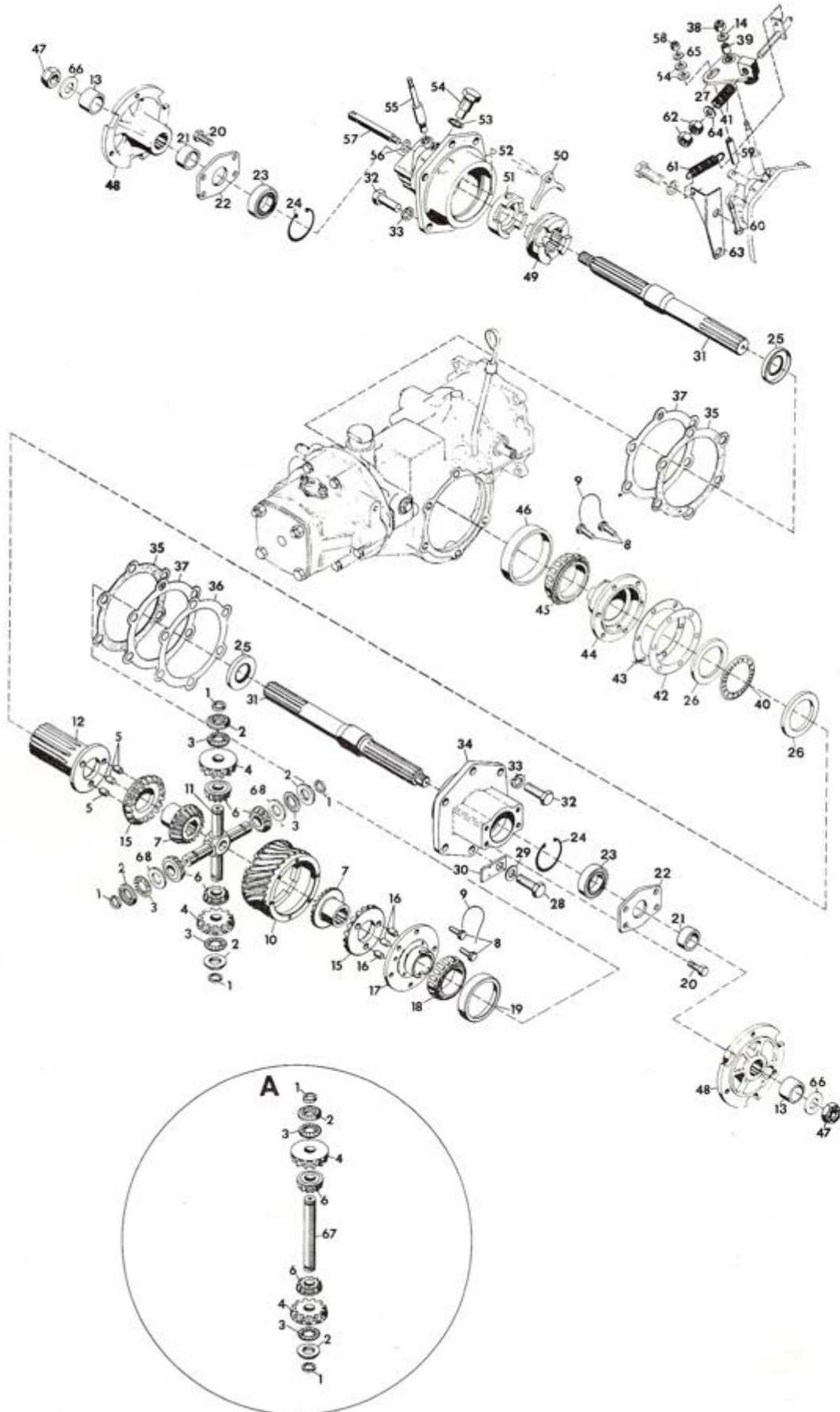
NOTE: Circle "A" Pertains to Commercial Tractors Only

STANDARD DIFFERENTIAL



ITEM NO.	PART NO.	QTY.	DESCRIPTION
1	22505	2	Block, Drive
2	6708	2	Gear, Spider Bevel
3	12556	1	Pin, Spider Pinion
4	13497	1	Gear, 4-Lead Worm
	13498	1	Gear, 6 Start Worm
5	271089	1	Key, Woodruff; .125 x .375 Hard
6	22506	1	Seal, Oil; 1.188 x 2.000 x .250
7	6709	2	Gear, Differential Bevel
8	22504	2	Housing, Differential
9	12131	2	Cone, Roller Bearing
10	12130	2	Cup, Roller Bearing
11	120368	4	Nut, Hex; 5/16-24
12	138538	4	Washer, Lock; 5/16 Int. Tooth
13	181623	4	Bolt, Hex; 5/16-24 x 2-3/4
14	22502	2	Nut, 3/4-10 Light Thin Hex
15	22507	2	Hub, Wheel
16	180120	8	Bolt, Hex; 3/8-16 x .750
17	22512	2	Spacer
18	22501	2	Spacer
19	22503	2	Plate, End
20	32050	2	Bearing, Ball; 1.000 x 2.000 x .562
21	22497	2	Ring, Retaining; 2.000 Bore
22	12596	2	Shim, Axle Housing; .020
23	12595	2	Shim, Axle Housing; .005
24	22493	2	Axle, Straight
25	180173	11	Bolt, Hex; 1/2-13 x 1
26	13624	1	Bolt, Hex; 1/2-13 x 1 Nylon Insert
27	120396	1	Washer, Flat; .500 x 1.062 x .095
28	12594	1	Washer, Oil Drain
29	120384	10	Washer, Lock; 1/2 SP
30	22495	2	Housing, Axle
31	12597	2	Gasket, Axle Housing
32	131017	2	Washer, Flat; .812 x 1.469 x .134

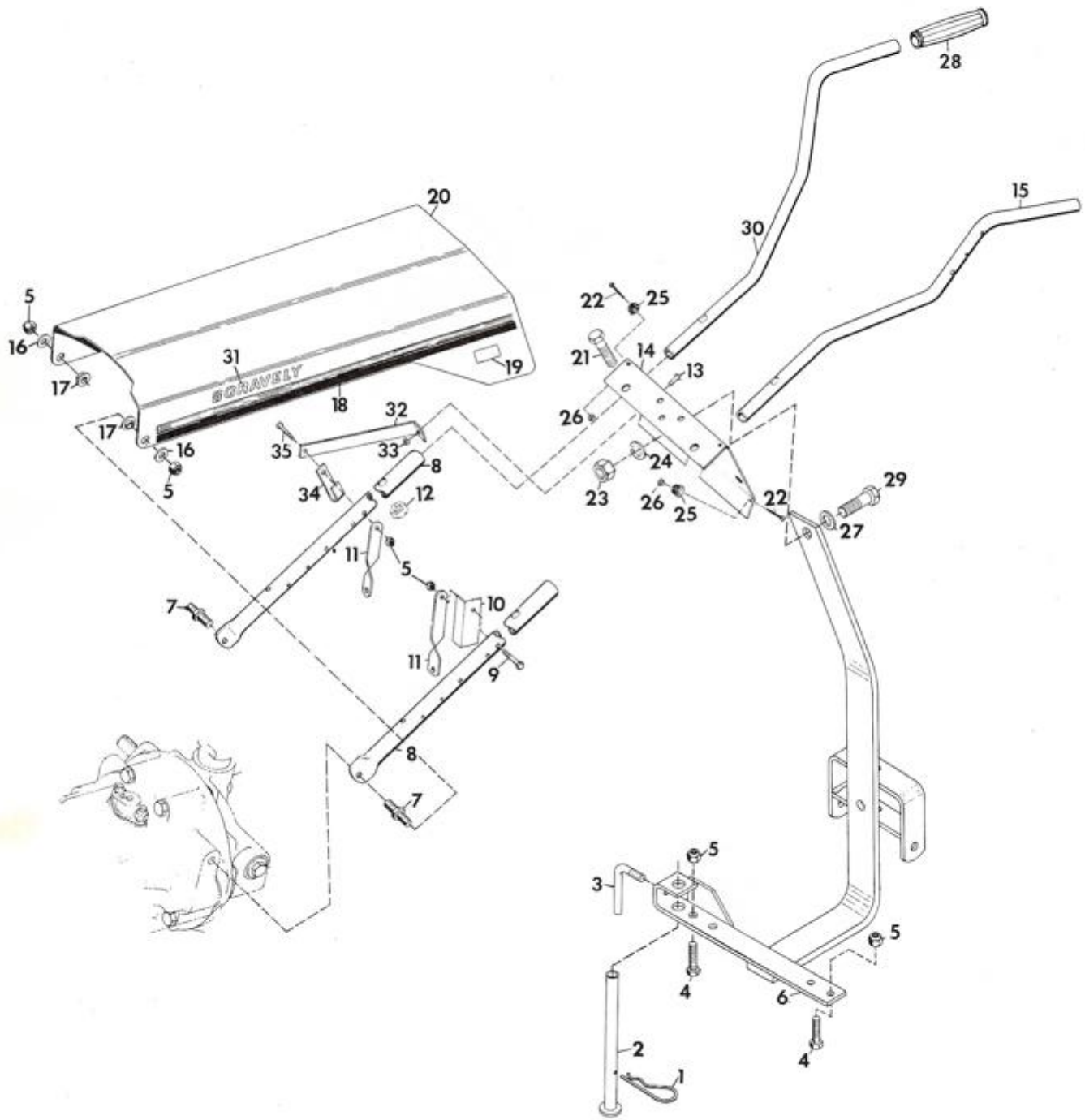
SWIFTAMATIC DIFFERENTIAL



ITEM NO.	PART NO.	QTY.	DESCRIPTION
1	15733	4	Ring, Retaining; .750 Shaft
2	15734	4	Spacer, .765 x 1.245 x .200
3	6741	4	Bearing, Needle Thrust; .752 x 1.240 x .078
4	6702	2	Gear, Differential Shifting Bevel
5	141234	3	Pin, Dowel; .375 x .375
6	6708	4	Gear, Spider Bevel
7	6709	2	Gear, Differential Bevel
8	18604	12	Bolt, Special; 5/16-18
9	18605	2	Wire, Bolt
10	15729	1	Gear, Worm 8 Start
11	15732	1	Pin, Spider
12	22498	1	Shifter, Splined Pinned
13	22512	2	Spacer
14	120393	1	Washer, Flat; .344 x .688 x .065
15	6703	2	Gear, Pinned Bevel
16	6714	3	Pin, Dowel; .375 x .500
17	12126	1	Housing, Pinned
18	12131	1	Cone, Roller Bearing
19	12130	1	Cup, Roller Bearing
20	180120	8	Bolt, Hex; 3/8-16 x .750
21	22501	2	Spacer
22	22503	2	Plate, End
23	11293	2	Bearing, Ball; 1.000 x 2.000 x .562
24	22497	2	Ring, Retaining; 2.000 Bore
25	22506	2	Seal, Oil; 1.188 x 2.000 x .250
26	22500	2	Race, Thrust; 2.002 x 2.740 x .031
27	6723	1	Arm, Shifter
28	13624	1	Bolt, Hex; 1/2-13 x 1 Nylon Insert
29	120396	1	Washer, Flat; .500 x 1.062 x .095
30	12594	1	Washer, Oil Drain
31	22493	2	Axle, Straight
32	180173	11	Bolt, Hex; 1/2-13 x 1
33	120384	11	Washer, Lock; 1/2 SP
34	22495	1	Housing, Axle
35	12597	2	Gasket, Axle Housing
36	12595	2	Shim, Axle Housing; .005
37	12596	2	Shim, Axle Housing; .020
38	419455	1	Nut, Lock; 5/16-18 Washer Insert Hex
39	6724	1	Bushing, Nylon; .375 x .503 x .875
40	6743	1	Race, Bearing Thrust; .060
41	10682	1	Spring, Compression; 2 x .720 x 15.5 LB/in
42	6739	1	Shim, Clutch Worm Gear; .005
43	6740	1	Shim, Clutch Worm Gear; .020
44	22496	1	Housing, Clutch
45	12501	1	Cone, Roller Bearing
46	12500	1	Cup, Roller Bearing
47	22502	2	Nut, 3/4-10 Light Thin Hex
48	22507	2	Hub, Wheel
	22551	2	Hub, 7" Wheel
49	11632	1	Clutch, Shifting
50	6719	1	Yoke, Shifting
51	11156	1	Clutch, Stationary
52	22494	1	Housing, Axle; 2-Speed
53	12707	1	Washer, Oil Strainer Nut
54	6734	1	Bolt, Stationary Clutch
55	10505	1	Pivot, Stationary
56	6732	1	O-Ring; .438 x .625 x .094
57	6721	1	Pin, Clutch Sliding
58	419454	1	Nut, Lock; 1/4-20 Washer Insert
59	24382	1	Bushing
60	24383	1	Bolt, 1/4-20 x 3-1/4 Grade 8 Plated
61	10681	1	Spring, Extension; 2.50 x .62 x 5.8 LB/in
62	124925	2	Nut, Jam; 3/8-24 Hex
63	10680	1	Bracket, 2-Speed Spring
64	120394	2	Washer, Flat; .406 x .812 x .065 LB/in
65	120392	1	Washer, Flat; .281 x .625 x .065
66	131017	2	Washer, Flat; .812 x 1.469 x .134
67	22499	1	Pin, Solder
68	6742	2	Race Bearing Thrust .060

NOTE: Circle "A" Pertains to Tractor Models
5240, 5260, 5460 and 5660

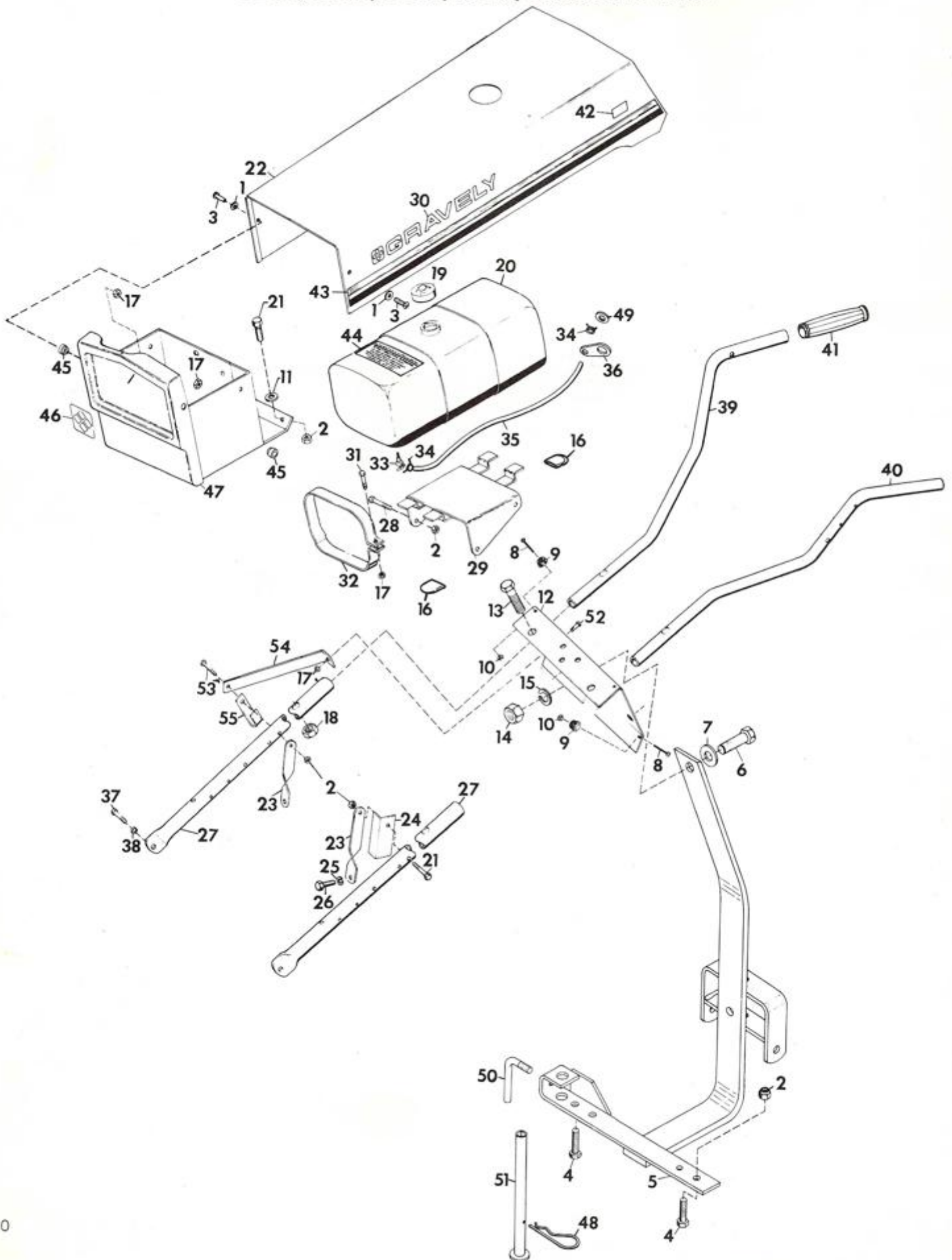
**FRAME FOR MODELS
5200, 5210 AND 5240**



<u>ITEM NO.</u>	<u>PART NO.</u>	<u>QTY.</u>	<u>DESCRIPTION</u>
1	10405	1	Cotter, Hair Pin
2	24834	1	Stand, Weldment
3	13457	1	Handle, Adjusting
4	180126	2	Bolt, Hex; 3/8-16 x 1.50
5	456004	6	Nut, Lock; 3/8-16 Washer Insert Hex
6	24844	1	Hitch, Weldment; 8 H.P.
	24843	1	Hitch, Weldment; 10 & 12 H.P.
7	21028	2	Stud, Hood
8	10643	2	Support, Tube
9	180132	1	Bolt, Hex; 3/8-16 x 2-1/4
10	10933	1	Stop, Rod
11	10655	2	Brace, Handle
12	120371	2	Nut, Hex; 1/2-20
13	180018	1	Bolt, Hex; 1/4-20 x .625
14	24751	1	Panel, Instrument Manual
15	11982	1	Bar, Right Handle
16	120394	2	Washer, Flat; .406 x .812 x .065
17	12117	2	Pivot, Hood
18	24571	1	Stripe, R. H. Side Consumer Walker
	24572	1	Stripe, L. H. Side Consumer Walker
19	24766	2	Decal, Model 5210
	24579	2	Decal, Model 5200
	24580	2	Decal, Model 5240
20	21027	1	Hood, Commercial
21	181705	2	Bolt, Hex; 1/2-20 x 2
22	159341	4	Screw, Mach; 6-32 x 5/8 Pan HD C-Recess
23	124589	1	Nut, Hex; 5/8-11
24	121574	1	Washer, Lock; 5/8 SP
25	18183	4	Bumper
26	427254	4	Nut, Mach Lock; 6-32 Washer Insert
27	421879	1	Washer, Flat; .656 x 1.250 x .100
28	10671	2	Grip, Hand
29	271547	1	Bolt, Hex; 5/8-11 x 1-1/2
30	10658	1	Bar, Left Handle
31	24588	2	Decal, Gravely Logo
32	10996	1	Brace, Instrument Panel
33	419454	1	Nut, Lock; 1/4-20 Washer Insert
34	10684	1	Retainer, 2-Speed Control
35	180134	1	Bolt, Hex; 3/8-16 x 2-1/2

NOTE: Item Numbers 13, 32, 33, 34, 34 Pertains to Tractor Model 5240

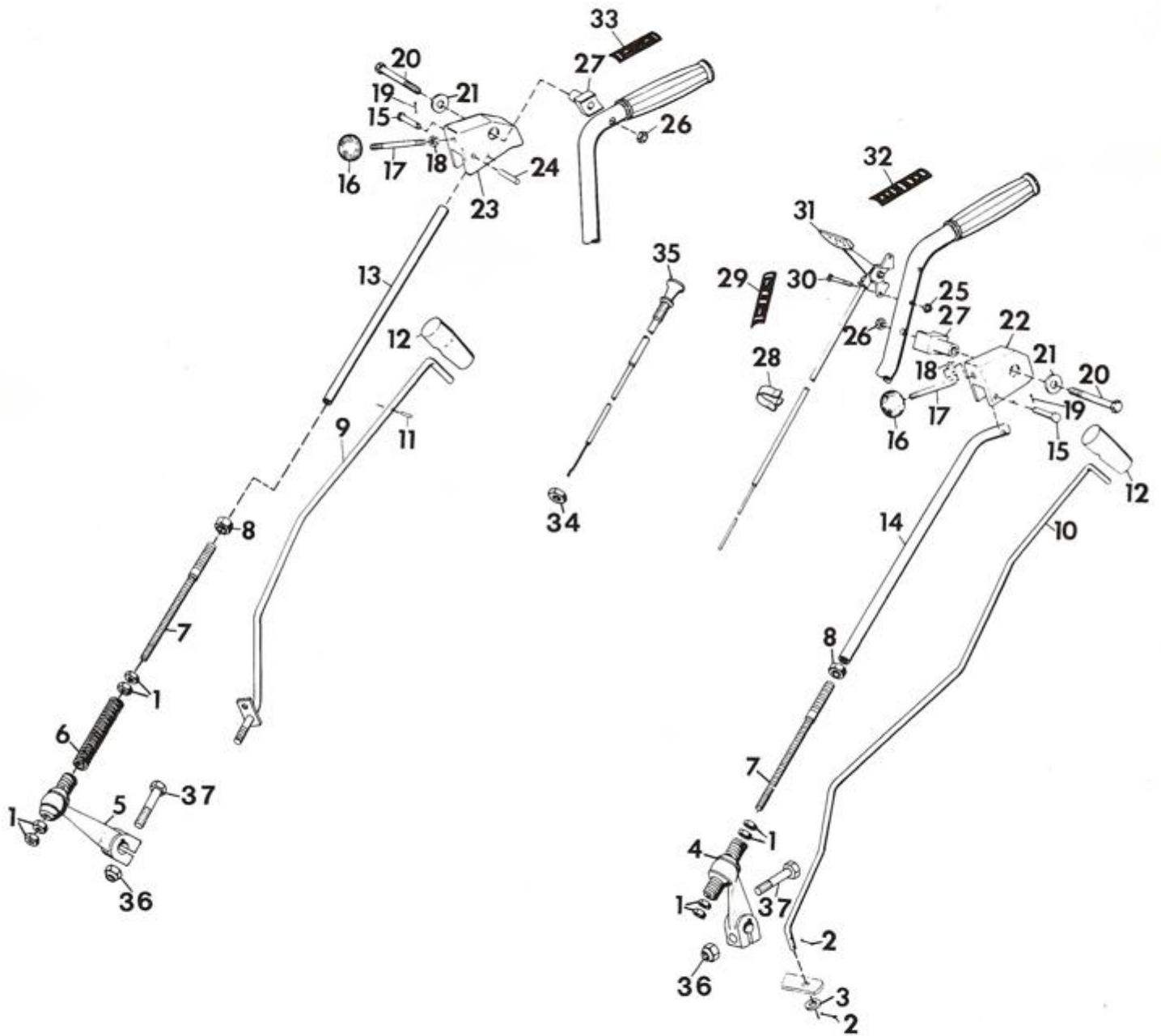
**FRAME FOR MODELS
5260, 5265, 5460, 5645, 5660 AND 5665**



<u>ITEM NO.</u>	<u>PART NO.</u>	<u>QTY.</u>	<u>DESCRIPTION</u>
1	120392	2	Washer, Flat; .281 x .625 x .065
2	456004	6	Nut, Lock; 3/8-16 Washer Insert Hex
3	160556	2	Screw, Mach; 1/4-20 x 1 Pan HD
4	180126	2	Bolt, Hex; 3/8-16 x 1-1/2
5	24844	1	Hitch, Weldment; 8 H.P.
	24843	1	Hitch, Weldment; 10 & 12 H.P.
6	271547	1	Bolt, Hex; 5/8-11 x 1-1/2
7	421879	1	Washer, Flat; .656 x 1.250 x .100
8	159341	4	Screw, Mach; 6-32 x 5/8 Pan HD C-Recess
9	18183	4	Bumper
10	427254	4	Nut, Mach Lock; 6-32 Washer Insert
11	120394	2	Washer, Flat; .406 x .812 x .065
12	24743	1	Instrument Panel, Commercial
	24744	1	Instrument Panel, Consumer
13	181705	2	Bolt, Hex; 1/2-20 x 2
14	124589	1	Nut, Hex; 5/8-11
15	121574	1	Washer, Lock; 5/8 SP
16	31620	4	Cover 1.0 x .125 x 1.0
17	419454	3	Nut, Lock; 1/4-20 Washer Insert
18	120371	2	Nut, Hex; 1/2-20
19	10756	1	Cap, Gas Tank
20	10636	1	Assembly, Fuel Tank
21	180132	1	Bolt, Hex; 3/8-16 x 2-1/4
22	10650	1	Hood
23	10655	2	Brace, Handle
24	10933	1	Stop, Rod
25	131100	2	Washer, Lock; 7/16 SP Heavy
26	180149	2	Bolt, Hex; 7/16 x 1-1/2
27	10643	2	Support, Tube
28	180129	2	Bolt, Hex; 3/8-16 x 1-7/8
29	10637	1	Weldment, Fuel Tank Bracket
30	24588	2	Decal, Gravelly Logo
31	180024	2	Bolt, Hex; 1/4-20 x 1-1/4
32	10640	2	Strap, Fuel Tank
33	7354	1	Valve and Strainer
34	7216	2	Clamp, Fuel Hose
35	21134	2 ft.	Line, Fuel .50 OD x .25 ID x Bulk Length
36	21489	1	Bracket, Fuel Line
37	180122	2	Bolt, Hex; 3/8-16 x 1
38	120382	2	Washer, Lock; 3/8 SP
39	11982	1	Bar, Right Handle
40	10658	1	Bar, Left Handle
41	10671	2	Grip, Hand
42	24586	2	Decal, Model 5265; Commercial
	24587	2	Decal, Model 5665; Commercial
	24583	2	Decal, Model 5260
	24584	2	Decal, Model 5460
	24582	2	Decal, Model 5645; Commercial
	24585	2	Decal, Model 5660
43	32015	1	Decal, Side Stripes Commercial
	31831	1	Decal, Side Stripes Consumer
44	11989	1	Decal, Electrical System Warning
45	12117	2	Pivot, Hood
46	10697	1	Decal, Comm. Front
47	10644	1	Weldment, Grille
48	10405	1	Cotter, Hair Pin
49	120395	1	Washer, Flat; .469 x .938 x .065
50	13457	1	Handle, Adjusting
51	24834	1	Stand, Weldment
52	180018	1	Bolt, Hex; 1/4-20 x .625
53	180134	1	Bolt, Hex; 3/8-16 x 2-1/2
54	10996	1	Brace, Instrument Panel
55	10684	1	Retainer, 2-Speed Control

NOTE: Item Numbers 52 through 55 Pertains to Tractor Models 5645, 5265, 5665, 5260, 5460 and 5660.

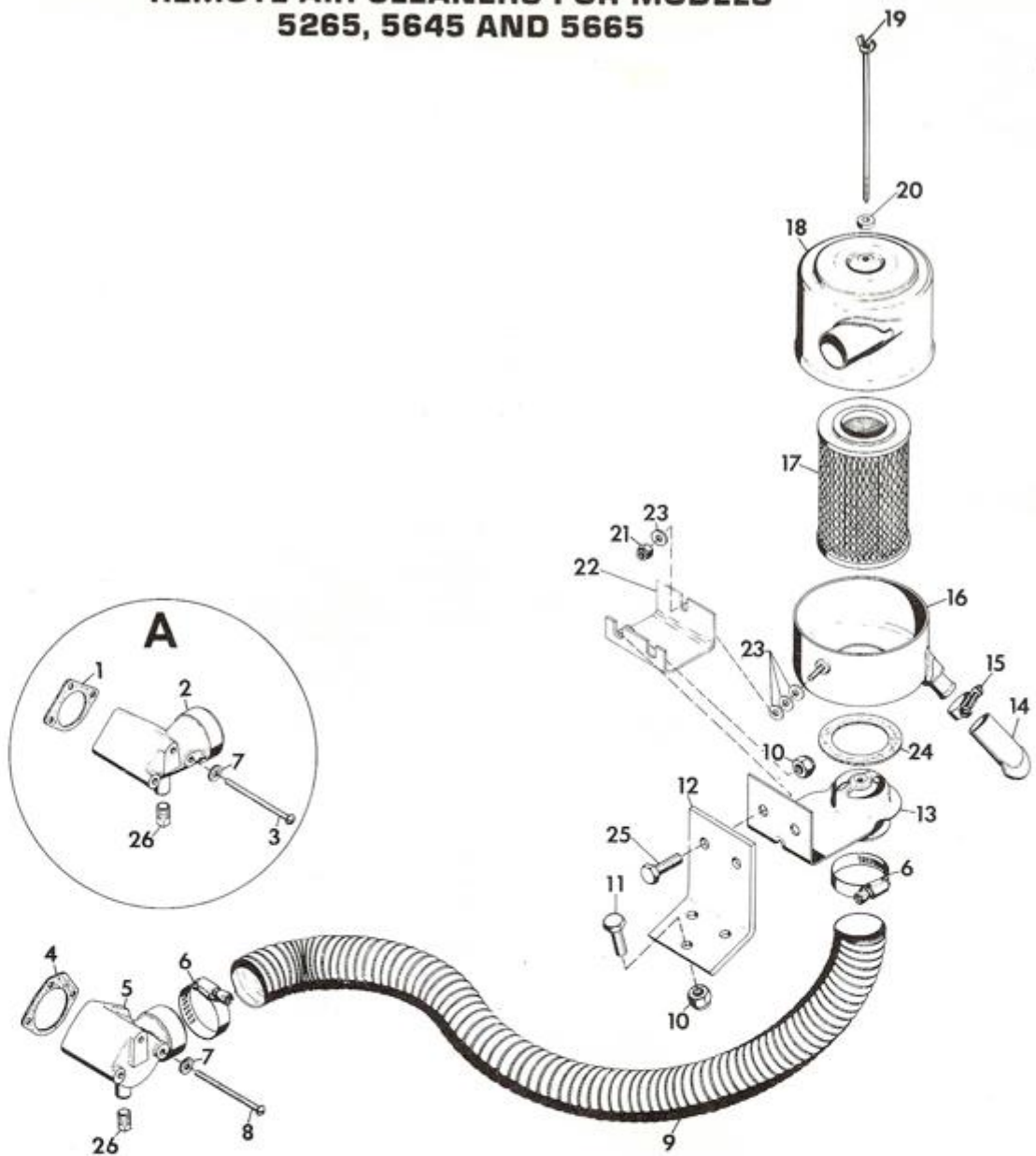
CONTROLS



<u>ITEM NO.</u>	<u>PART NO.</u>	<u>QTY.</u>	<u>DESCRIPTION</u>
1	124829	8	Jam; 3/8-16 Hex
2	121224	2	Pin, Cotter; .094 x 1.000
3	120394	1	Washer, Flat; .406 x .812 x .065
4	21383	1	Assembly, Hi-Lo Lever
5	21384	1	Assembly, Fwd-Rev Lever
6	21506	1	Spring, Fwd-Rev Neutral Return
7	20269	2	Rod, Control Extension
8	120238	2	Nut, Jam; 1/2-13
9	10677	1	Lever, Actuating Shaft
10	10932	1	Rod, Attachment
11	423664	1	Pin, Spring; .094 x .688
12	10683	2	Handle; Rubber Shifter
13	20267	1	Rod, Fwd-Rev Control
14	20268	1	Rod, Hi-Lo Control
15	10672	2	Pin, Clevis; .375 x 1.250
16	10670	2	Knob, Control
17	10669	2	Rod, Shifter
18	272123	2	Nut, Jam; 7/16-20 Hex
19	177923	2	Pin, Cotter; .125 x .750
20	180192	2	Bolt, Hex; 1/2-13 x 3-1/2
21	120396	2	Washer, Flat; .500 x 1.062 x .095
22	10666	1	Support, Hi-Lo Shifter Rod
23	11985	1	Support, Forward-Reverse Shifter Rod
24	453670	1	Pin, Spring; 1/4 x 1-1/8
25	190254	2	Nut, Lock; 10-24 Washer Insert
26	20541	2	Nut
27	10667	2	Pivot, Handle Lever
28	8260	1	Clip, Conduit
29	21091	1	Decal, Gear Shift
30	436738	2	Screw, Mach; 10-24 x 1-1/2 Pan HD
31	21103	1	Lever, Throttle Control; 8 H.P.
	21196	1	Lever, Throttle Control; 10 & 12 H.P.
32	21092	1	Decal, Throttle
33	21090	1	Decal, Fwd-Rev
34	124925	1	Nut, Jam; 3/8-24 Hex
35	10696	1	Control, Choke
36	419455	2	Nut, Lock 5/16-18 Hex HD Washer Insert
37	180087	2	Bolt, Hex 5/16-18 x 2.00

NOTE: Item Numbers 9 and 11 Pertains to Tractor Models
5240, 5645, 5260, 5460, 5660, 5265 and 5665.

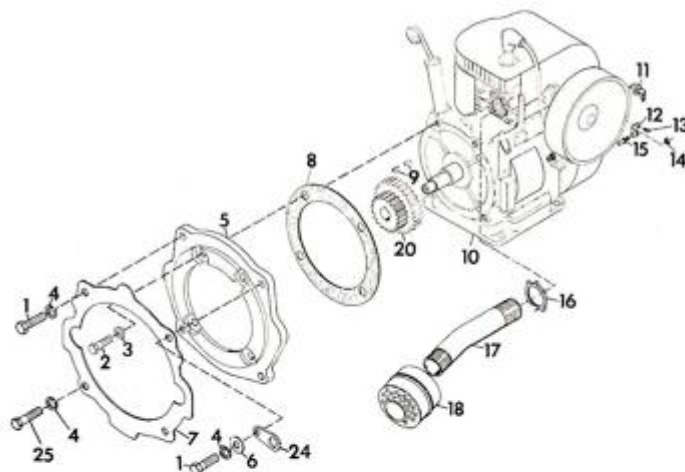
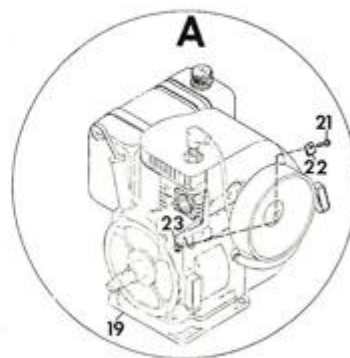
REMOTE AIR CLEANERS FOR MODELS 5265, 5645 AND 5665



ITEM NO.	PART NO.	QTY.	DESCRIPTION
1	21324	1	Gasket, Air Cleaner Elbow
2	24355	1	Elbow, Air Cleaner
3	436706	3	Screw, Mach; 8-32 x 2-3/4 Pan HD
4	21229	1	Gasket, Air Cleaner Elbow
5	24823	1	Elbow, Air Cleaner
6	21245	2	Clamp, 2.25 Dia. Hose
7	113893	3	Washer, Copper; .219 x .500 x .049
8	436762	3	Screw, Mach; 10-32 x 3 Pan HD
9	21233	1	Hose, Air Cleaner
10	456004	5	Nut, Lock; 3/8-16 Washer Insert Hex
11	180122	2	Bolt, Hex; 3/8-16 x 1
12	21234	1	Bracket, Air Cleaner to Tractor
13	21337	1	Bracket, Air Cleaner
14	21335	1	Unloader, Dust
15	21334	1	Clamp, Air Cleaner
16	21332	1	Housing, Lower
17	21333	1	Filter, Element
18	21331	1	Housing, Upper
19	21330	1	Bolt, Special Air Cleaner
20	10905	1	Washer, Sealing
21	419454	1	Nut, Lock; 1/4-20 Washer Insert
22	21473	1	Support, Remote Air Cleaner
23	120392	4	Washer, Flat; .281 x .625 x .065
24	21336	1	Gasket, Air Cleaner
25	180123	2	Bolt, Hex; 3/8-16 x 1-1/8
26	103877	1	Plug, Pipe; 1/8 in. SQ HD Steel

NOTE: Circle "A" Pertains to Tractor Model 5265.

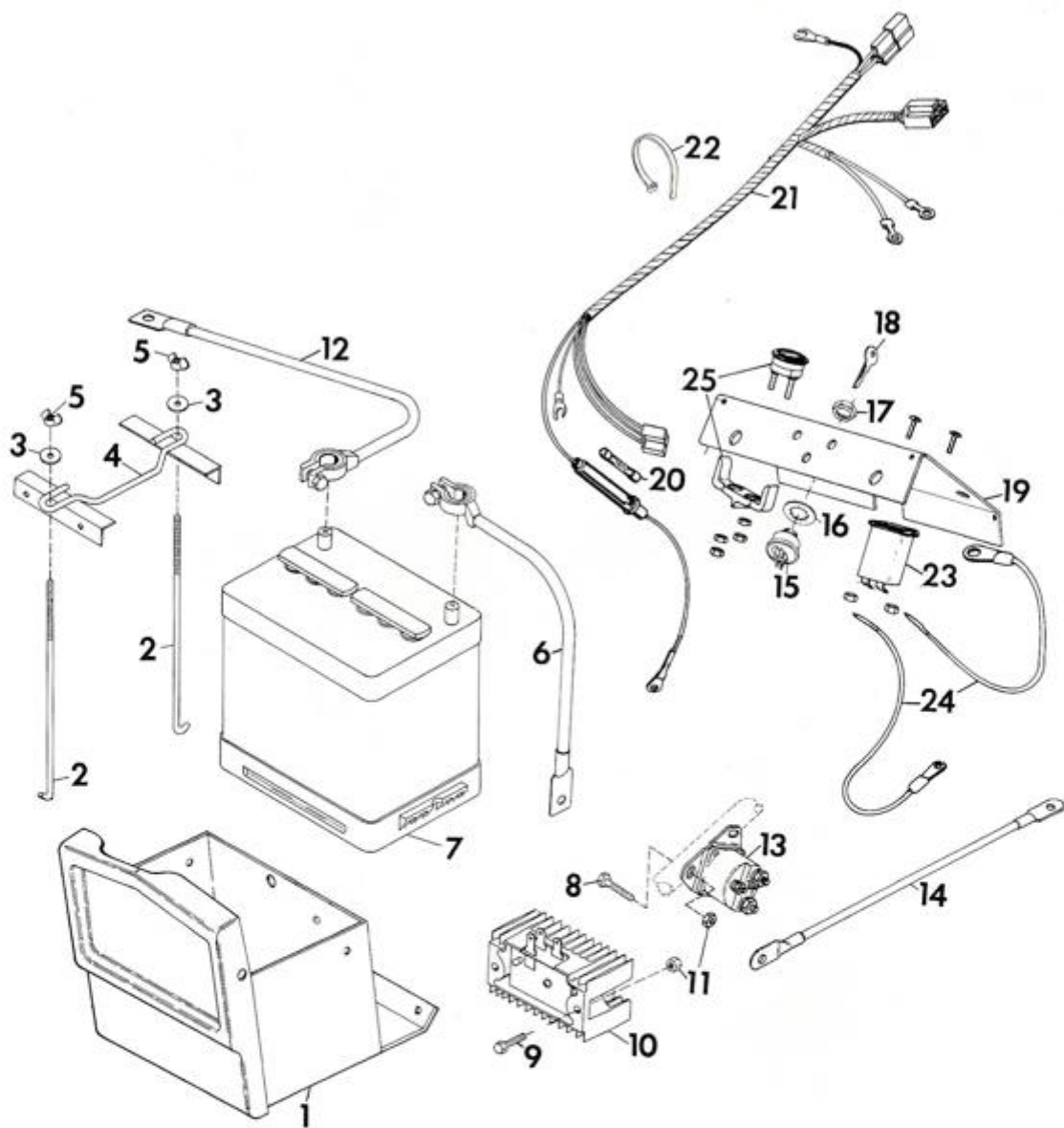
ENGINE AND EXHAUST SYSTEM



ITEM NO.	PART NO.	QTY.	DESCRIPTION
1	180149	2	Bolt, Hex; 7/16-14 x 1-1/2
2	180121	4	Bolt, Hex; 3/8-16 x 7/8, 8 H.P.
	180122	4	Bolt, Hex; 3/8-16 x 1, 10 & 12 H.P.
3	131099	4	Washer, Lock; 3/8 SP Heavy
4	131100	4	Washer, Lock; 7/16 SP Heavy
5	14938	1	Adapter, Engine; 8 H.P.
	10731	1	Adapter, Engine; 10 & 12 H.P.
6	120395	1	Washer, Flat; .469 x .938 x .065
7	10635	1	Gasket, Chassis to Adapter
8	10732	1	Gasket, Engine to Adapter, 10 & 12 H.P.
	15718	1	Gasket, Engine to Adapter, 8 H.P.
9	124546	2	Key, Woodruff; 5/32 x 5/8 Hard
10	24662	1	Engine, 12 H.P. 2-Wheel Electric Commercial
	24633	1	Engine, 10 H.P. 2-Wheel Electric Consumer
	24634	1	Engine, 12 H.P. 2-Wheel Manual Commercial
	24635	1	Engine, 12 H.P. 2-Wheel Electric Consumer
11	7331	1	Clip, Speed
12	18522	1	Bracket
13	160515	1	Screw, Mach; 1/4-20 x 1/2 Pan HD C-Recess
14	120375	1	Nut, Hex; 1/4-20
15	18521	1	Adapter, Conduit
16	10866	1	Nut, Conduit; 1 Pipe
17	10865	1	Tube, Muffler Kohler 236347; 10 & 12 H.P.
18	8227	1	Muffler, 10 & 12 H.P.
19	24660	1	Engine, 8 H.P. 2-Wheel Manual Commercial
	21042	1	Engine, 8 H.P. 2-Wheel Manual Consumer
	24661	1	Engine, 8 H.P. 2-Wheel Electric Commercial
	24639	1	Engine, 8 H.P. 2-Wheel Electric Consumer
20	17838	1	Gear, 10/12 DP 21/30 Teeth
21	159920	1	Screw, Mach; 10-24 x 1/2 Pan HD C-Recess
22	15453	1	Clip
23	190254	1	Nut, Lock; 10-24 Washer Insert
24	21489	1	Bracket, Fuel Line
25	180147	2	Bolt, Hex; 7/16-14 x 1-1/4

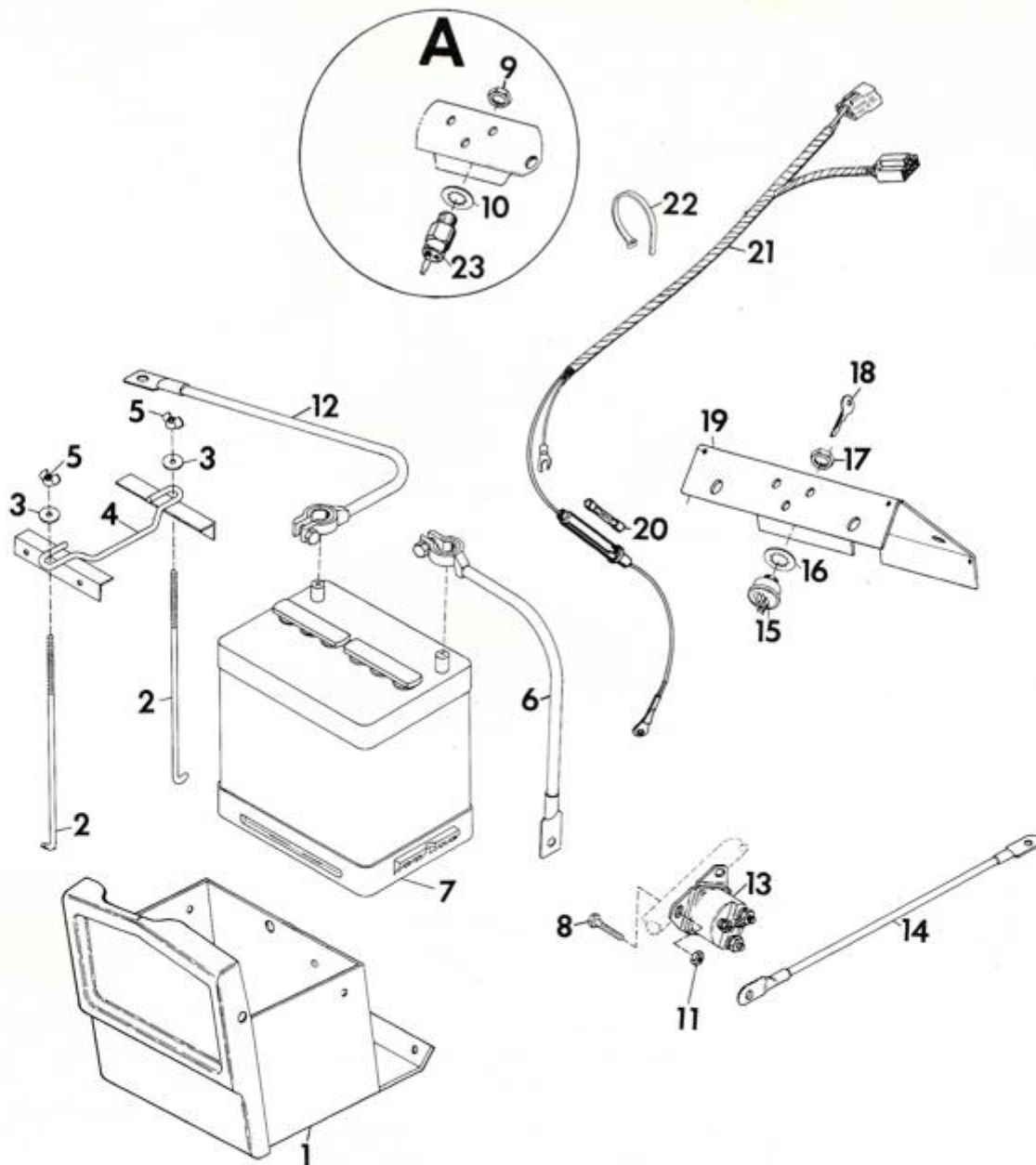
NOTE: Circle "A" Pertains to 8 H.P.

ELECTRIC SYSTEM 5265 AND 5665



ITEM NO.	PART NO.	QTY.	DESCRIPTION
1	10644	1	Weldment, Grille
2	12894	2	Bolt, Hold-Down
3	446354	2	Washer, Flat; 5/16 x 7/8 x .065
4	10633	1	Clamp, Battery Hold-Down
5	10413	2	Nut, Wing; 1/4-20 Washer Insert
6	6980	1	Cable, Negative Battery
7	7274	1	Battery, 12V
8	180042	2	Bolt, Hex; 1/4-20 x 1-3/4
9	180020	2	Bolt, Hex; 1/4-20 x 3/4
10	18009	1	Regulator, Rectifier
11	120375	4	Nut, Hex; 1/4-20
12	21368	1	Cable, Positive Battery
13	7277	1	Switch, Mag; Delco 1466, Prestolite E017811
14	6981	1	Cable, Mag Switch to Starter
15	19223	1	Switch, Ignition; Indak J463-A
16	19667	1	Washer, Lock; 9/16 Int. Tooth Indak 85013
17	19666	1	Nut, Jam; 9/16-24 Indak 83024
18	18570	1	Key, Ignition Switch
19	24745	1	Assembly, Instrument Panel; Commercial
20	14893	1	Fuse, 30 AMP Acc-30
21	24760	1	Harness, Wiring; 5000 Series 15 AMP
22	10629	5	Tie, Cable
23	21414	1	Hourmeter
24	21425	2	Wire, Instrument Panel
25	21848	1	Gauge, Ammeter

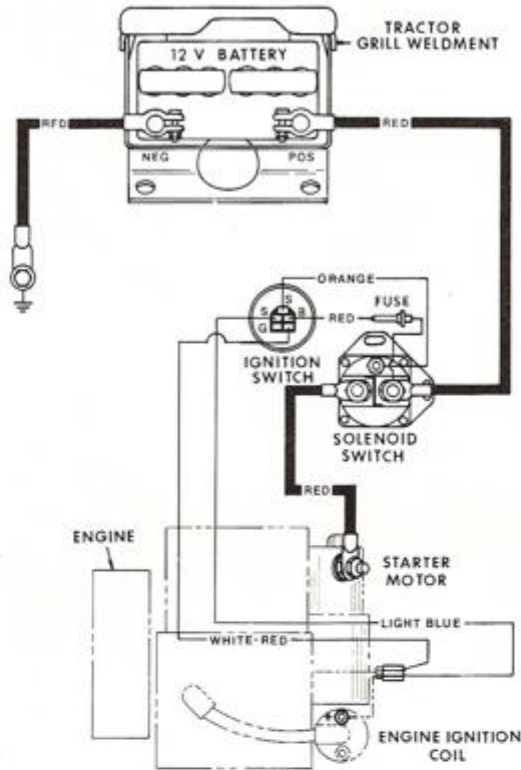
ELECTRIC SYSTEM 5260, 5460 AND 5660



ITEM NO.	PART NO.	QTY.	DESCRIPTION
1	10644	1	Weldment, Grille
2	12894	2	Bolt, Hold-Down
3	446354	2	Washer, Flat; 5/16 x 7/8 x .065
4	10633	1	Clamp, Battery Hold-Down
5	10413	2	Nut, Wing; 1/4-20 Washer Insert
6	6980	1	Cable, Negative Battery
7	7274	1	Battery, 12V
8	180042	2	Bolt, Hex; 1/4-20 x 1-3/4
9	18585	1	Nut, Jam; 5/8-32
10	18586	1	Washer, Lock; 5/8 Int. Tooth
11	120375	2	Nut, Hex; 1/4-20
12	21368	1	Cable, Positive Battery
13	7277	1	Switch, Magnetic
14	6981	1	Cable, Magnetic Switch to Starter
15	19223	1	Switch, Ignition
16	19667	1	Washer, Lock; 9/16 Int. Tooth
17	19666	1	Nut, Jam; 9/16-24
18	18570	1	Key, Ignition Switch
19	24744	1	Panel, Instrument
20	24858	1	Fuse, 3 AMP; 3 AG5
21	24759	1	Harness, Wiring; 5000 Series 3 AMP
22	10629	5	Tie, Cable
23	21104	1	Switch, Ignition

NOTE: Circle "A" Pertains to All Manual Start Tractors

WIRING DIAGRAM 5260, 5460 AND 5660



WIRING DIAGRAM 5265 AND 5665

